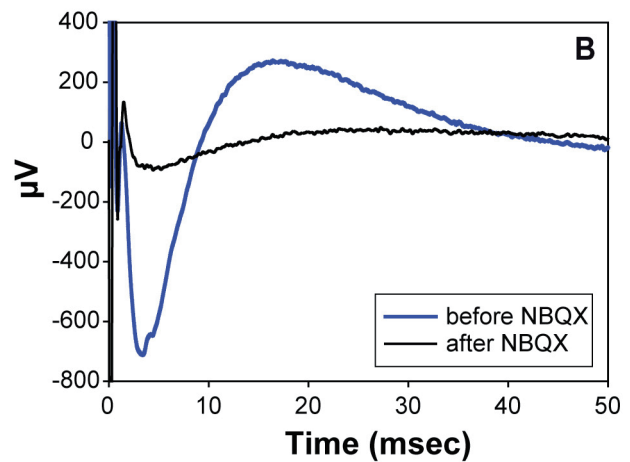
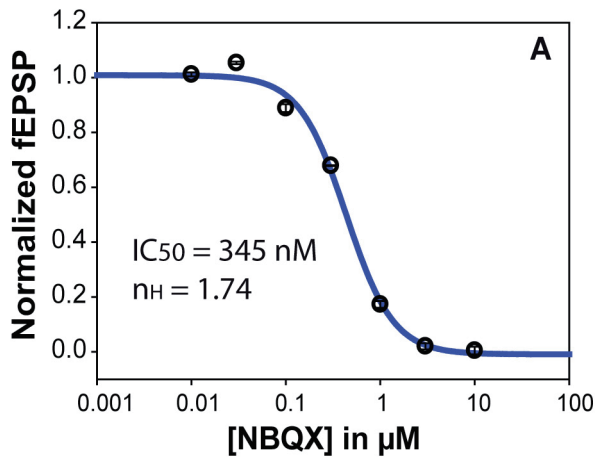
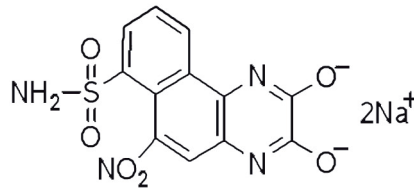


P-002 • **AMPA-MEDIATED SYNAPTIC TRANSMISSION** • **NBQX** • **AMPA/KA RECEPTORS**



NBQX



BIOLOGY

Schaeffer collateral stimulation in the CA1 region triggers field Excitatory Post Synaptic Potentials (fEPSPs) which are recorded in CA3 region. Evoked fEPSPs are stable and could be recorded over hours without modification of amplitude or slope parameters. Evoked fEPSPs result from fast glutamatergic transmission and are sensitive to AMPA receptor inhibitors/modulators such as NBQX (see A and B).

PATHOLOGIES ASSOCIATED WITH AMPA/KA RECEPTORS

Stroke
Epilepsy
Amyotrophic Lateral Sclerosis

BIBLIOGRAPHY

Catarzi, D et al. (2006), Med. Res. Rev. 27, 239-278.
Namba, T et al. (1994), Brain Res., 638, 36-44.
Sheardown, MJ (1993), Stroke, 24, 146-147.

Last update: March, 6, 2009