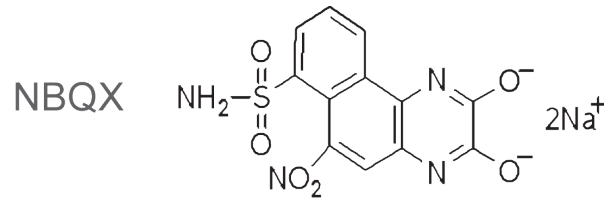
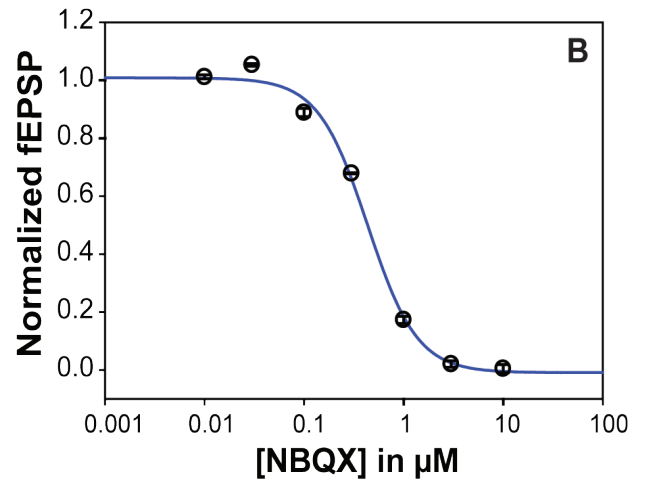
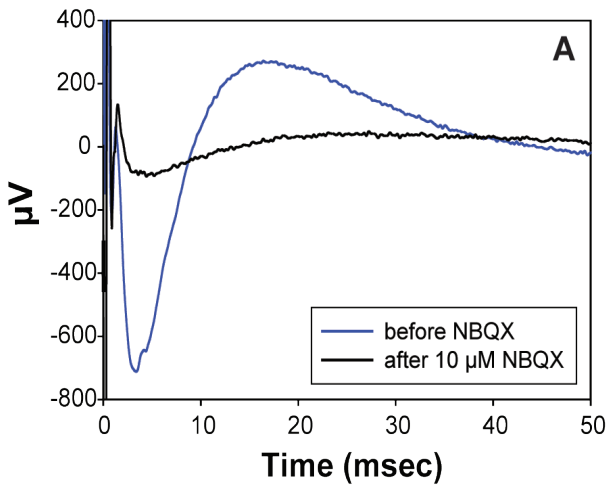


SST-001 • **GLUTAMATERGIC SYNAPTIC TRANSMISSION** • **NBQX** • **AMPA/KAINATE RECEPTORS**
 • **CNQX** •



BIOLOGY

Schaeffer collateral stimulation in the CA3 region triggers field Excitatory Post Synaptic Potentials (fEPSPs) that are recorded in the CA1 region and that correspond to a fast glutamatergic transmission. Evoked fEPSPs are very stable and could be recorded over hours without modification of amplitude or slope parameters. Evoked fEPSPs are sensitive to AMPA receptor inhibitors and modulators such as NBQX (see panel A) in a dose-dependent manner (see panel B).

BIBLIOGRAPHY

Goldstein JM, Litwin LC (1993). Mol Chem Neuropathol 18:145-152.
 Namba T, Morimoto K, Sato K, Yamada N, Kuroda S (1994). Brain Res 638:36-44.
 Sheardown MJ (1993). Stroke 24:1146-147; discussion 1153-144.

Last update: March, 6, 2009