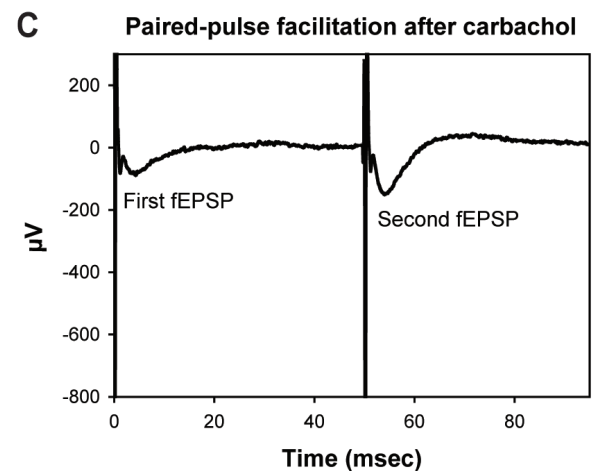
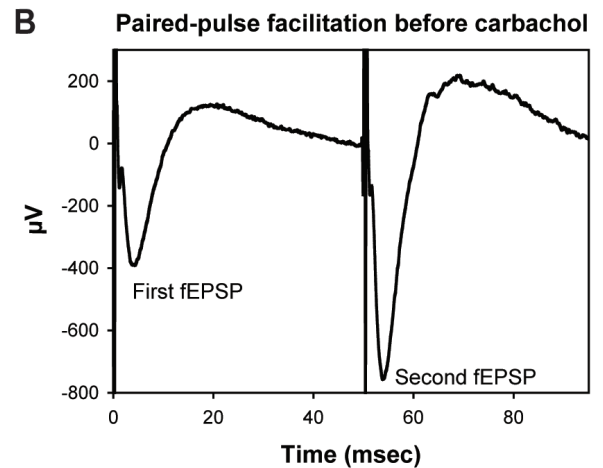
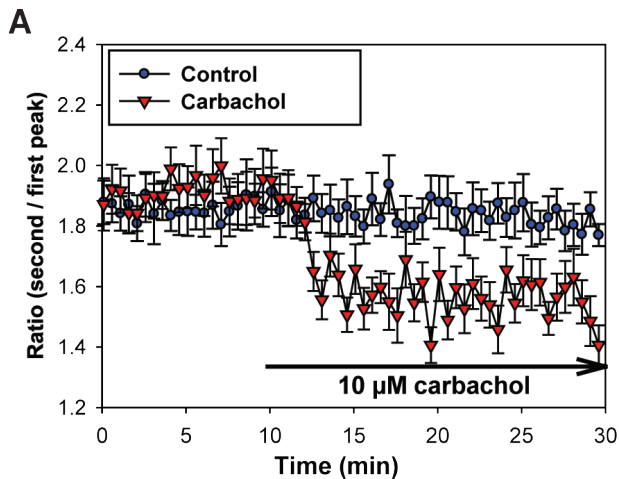


SST-002 ● **PAIRED-PULSE FACILITATION IN CA1**

● **CARBACHOL** ● **PRE-SYNAPTIC RECEPTORS (GPCR)**



BIOLOGY

Schaeffer collateral in CA1 region are stimulated by 50 ms-distant pulses (of sub-maximal intensity). Potentiation of the second response/peak corresponds to pre-synaptic calcium accumulation and increase of neurotransmitter release. This kind of protocol is appropriate to reveal pre-synaptic effects of molecules acting on GPCR (G-Protein Coupled Receptors). An illustration is given with a muscarinic M2 receptor agonist (carbachol, see panel A, B and C).

BIBLIOGRAPHY

- Iwata N, Higuchi M, Saïdo TC (2005). *Pharmacol Ther* 108:129-148.
- Price CJ, Karayannis T, Pal BZ, Capogna M (2005). *Neuropharmacology* 49 Suppl 1:45-56.
- Zucker RS, Regehr WG (2002) Short-term synaptic plasticity. *Annu Rev Physiol* 64:355-405.

Last update: March, 6, 2009

e l e c t r o p h y s i o l o g i c a l t e s t i n g f o r t h e C N S